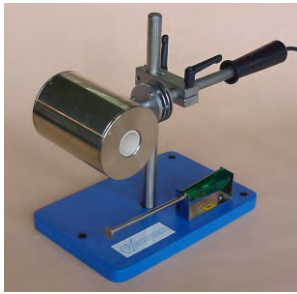




ELECTRIC INCINERATOR *model INCIN*



The determination of residue (ash content) on ignition at 900° C is worldwide used to determine the filler content in pulp, paper and board in the routines of Q.C. (Quality Control) of the production lines.

The sample is inserted in the ignition chamber, which is a furnace at 900°C, where all organic content is burned, remaining only the inorganic components.

The comparison of the initial weight of the sample and the final weight of the residue with an analytic scale gives the percentage of residue.

MAJOR TECHNICAL CHARACTERISTICS

Working temperature in the furnace	(900 ± 25)°C
Internal dimensions of the furnace	Ø25 mm x 120 mm

The INCIN's ignition chamber has been designed in a way that its size enables an optimized operation according to this test procedure. It is made of fine heat resistant ceramic and mounted in a stainless steel chamber filled with asbestos free thermal insulating materials, that ensure high efficiency with low energy consumption.

Cast iron base, adjustable supporting structure and device for removal of the residue from the ignition chamber ensure a comfortable and safety operation.

Power supply	220 VCA, 200 W, single phase
Dimensions	(350 x 180 x 300) mm (W x L x H)
Weight	8 kg

Note: due to constant development our equipment design and specifications are subject to change without notice.