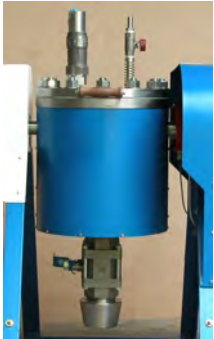




LABORATORY REACTOR model HB-51



The laboratory reactor model HB-51 has been designed for pilot chemical, semi-chemical and thermal pre-treatments of several types of biomass.

Unique patented rotative vessel design ensures perfect mixing and homogeneous reaction.

Rugged construction with reaction vessel fully manufactured in AISI 316 stainless steel ensures a safe and reliable operation for many years long.

Removeable sturdy lid gives full access to internal section of reaction vessel and lower mounted 76 mm ball valve enables easy discharge of reacted materials directly from vessel.

Digital controller enables accurate temperature control and easy programming of cooking sequence.

MAJOR TECHNICAL CHARACTERISTICS

| | |
|---|--|
| Reaction vessel | 9 L total capacity / 6 L useful volume |
| Adjustable working conditions in the vessel | up to 215° C and 20 bar |
| Safety valve | 25 bar |
| Digital temperature controller | Resolution 0,1° C |
| Digital pressure indicator | Resolution 0,1 bar |
| Electrical heating system | 5.000 W |
| 360° Rotative vessel | (4 ± 0,5) rpm |
| SEW drive gearmotor | |

| | |
|--------------|--------------------------------------|
| Power supply | 220 VCA, 60 Hz, 5,5 kW, single phase |
| Dimensions | (900 x 1300 x 1080) mm (W x L x H) |
| Weight | 210 kg |

Note: due to constant development our equipment design and specifications are subject to change without notice.