

# ADATMV - ECO Semi-Automated Torque Tester



Quick clamping system



Operation Screen

## Technical specifications:

- Using by touch screen display
- Measures in opening and closing directions
- Measuring range: 00.00 to 99.00 Kgf.cm
- 3 measuring cycles (constant reading, Opening or Closing, Removal +Breaking)
- Units: Kgf.cm / N.m / Inch.lbs / N.cm
- Rotating speed adjustable
- Accuracy:  $\pm 0.5$  % of full scale
- 30 products memorization
- 10 thresholds (limits) option
- 10 operators memorization
- Configuration by protected password (administrator)
- Memorization up to 990 measures (transferable)
- Dynamic display: statistics / hour / date
- Display: product name / operator / batch N° / Sample N°
- 1 USB output and 1 printer output (software & printer)
- Language: English
- Delivered with calibration certificate COFRAC
- 110 / 230 V - 50/60 Hz

**Automated part:**

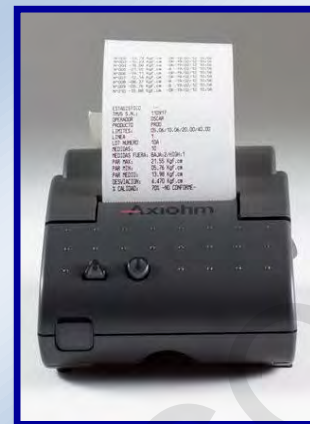
- Automatic zero before restarting cycle
- Settable height of column for all samples
- Easy-fast selector for cycles
- Settable speed for screwing and unscrewing operations

**Mechanical specifications:**

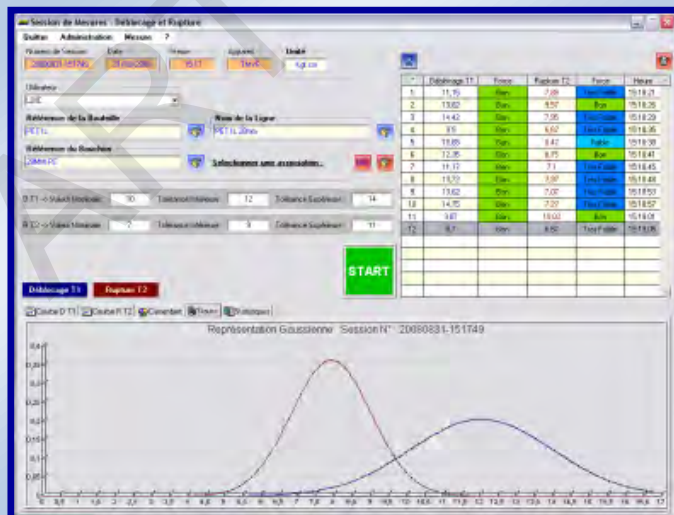
- Stainless steel Frame
- Choice of jaw, or bottle neck clamp
- Dimensions: 350 x 590 x 950 mm
- Weight: 50 kg

**Optional parts:**

- Mini printer
- QUALITORQ Software
- Calibration pack
- Dynamometric system



Mini printer (Optional)



“QUALITORQ” Software (Optional)