

PBBT-2 PET Bottle Burst Tester

(Equipment for Control of Resistance to Expand and Explosion of PET Bottle)



Automatic filling system



Testing interface

For PET bottles - Simulating filling process

PBBT-2 PET Bottle Burst Tester is specialized test equipment for testing the PET bottles. It's designed in accordance with the three international test methods which are commonly used. Users can choose the test method basing on their requirement. The PBBT-2 is capable to test the capacity of resilience under certain pressure or the rupture test of the PET bottle.

Through the reproduction of the pressurization, the process has been linearized and it increases to the predetermined point or the point of bursting.

After selecting the test program, the cycle will start automatically depending on the settings. The touch screen displays the pressure value in real time and record the maximum pressure and burst pressure.

Optional part water recycling system could provide way of saving water and avoiding the unsteady pressure of tap water which may influence a normal test.

Additional booster could be chosen. It may help the PBBT-2 free of high pressure source.

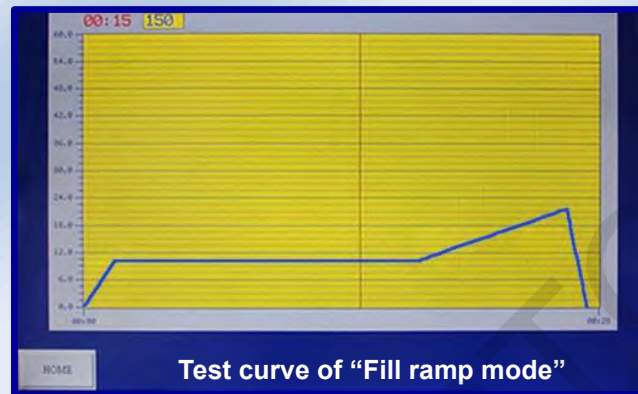
Characteristics:

- Standard equipment for the PET bottle industry.
- 3 international test methods are available
- PLC integrated & Touch screen control
- Automatic clamping and filling system
- Can store 10 operators and 30 products
- User defines the product lot number and sequence number
- Display curves of pressure and volume expansion during the test
- Monitors and records the temperature of the water during the test
- Applicable to 2.5 L bottle (consult us for bigger size)
- Stainless steel design ensures the durability of tester
- The door is made of polished transparent PMMA (very rugged) with perfect sealing performance
- RS232C data output: connected to either printer or software
- Integrated calibration function

Modes details:

Fill ramp mode:

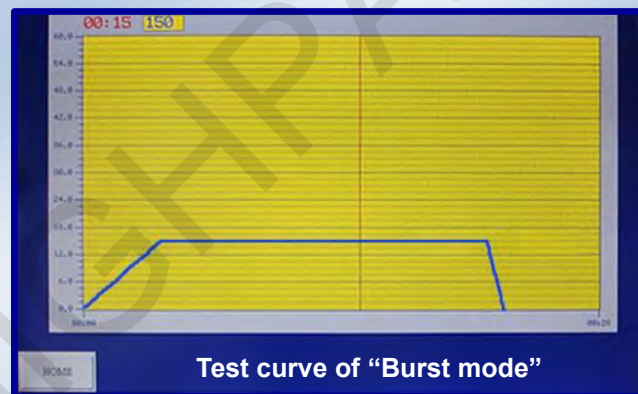
The filling ramp mode is designed to simulate the situation of filling lines of PET bottles. Under this mode, the PET bottles are pressurized rapidly to the initially preset pressure and maintained for a given time (for example 13 seconds). Then continue to increase the pressure with a speed of 0.1 bar/s until the outbreak of the bottle or reaching the max pressure or volume. Preset parameter includes: initial screening pressure, maximum pressure, and expansion of volume limit.



Test curve of "Fill ramp mode"

Burst mode:

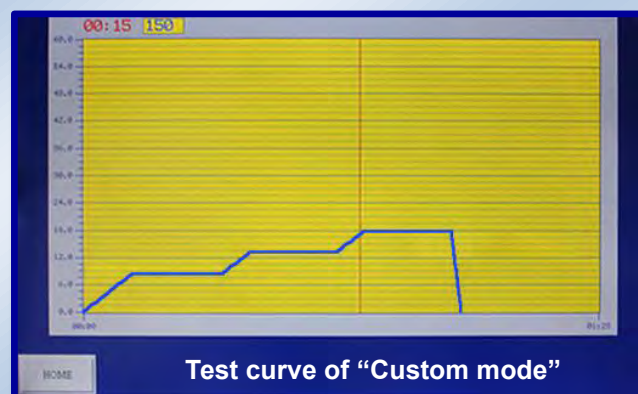
Under this mode, PET bottle will be pressurized rapidly to the initially preset pressure and maintained for a predefined period.



Test curve of "Burst mode"

Custom mode:

Under this mode, user is able to create the pressure curve to meet the particular conditions of control. Users can define the pressure curve by steps, after the adjustment is made, the corresponding curve will be displayed on the user interface.



Test curve of "Custom mode"

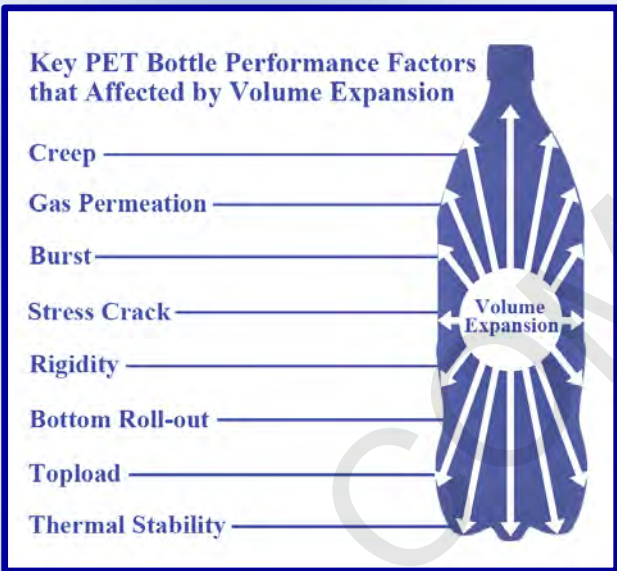
For - BEVERAGE & FOOD / COSMETIC / PHARMACEUTICALS / CHEMISTRY / METROLOGY

Technical specifications:

- Measuring range: 0 - 20 bar
- Resolution: 0.1 bar
- Sample range: Up to 2.5 L bottle
- Expansion in volume: Up to 2 L
- Power supply: 115/230V, 50 - 60Hz
- Pressure required: 3 bar water / 20 bar air source
- Temperature range: 0 to 50 °C
- Rear Panel: RS232 serial output
- Dimensions: 760 (L) × 650 (W) × 950 (H) mm
- Net weight: 95 kg

Optional parts:

- Water recycling system
- Additional booster
- Compatible clamping system
- Mini printer
- Calibration pack (including high accuracy pressure gauge for pressure calibration / calibration graduated flask / spacer)
- “QualiBurst” Software, which could display real-time testing curve with real-time pressure, expansion rate and temperature
- PABT version with hot water spraying system



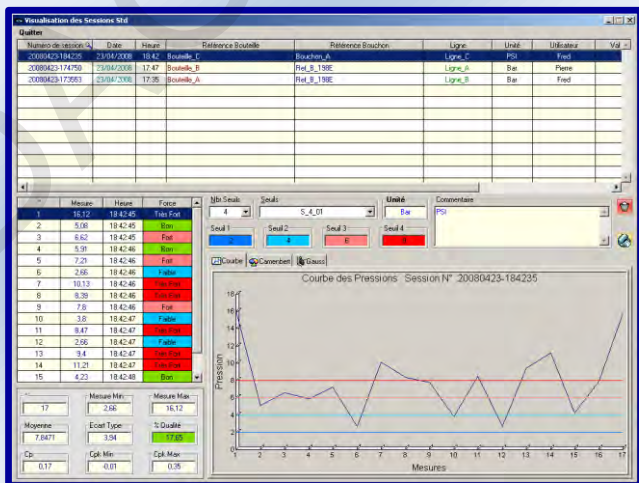
Water recycling system (Optional)



PABT with hot water spraying system (Optional)



Additional booster (Optional)



“QualiBurst” software for PABT-1



Compatible clamping system (Optional)