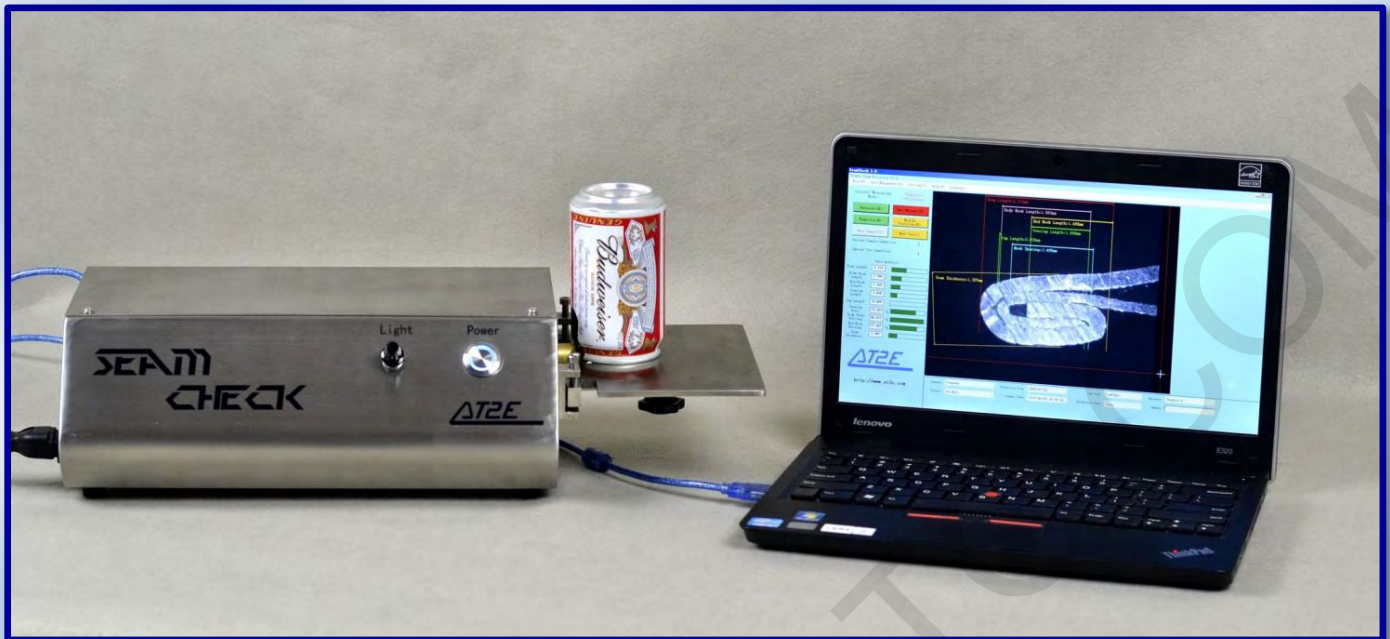


## SeamCheck - Automatic Double Seam Projector



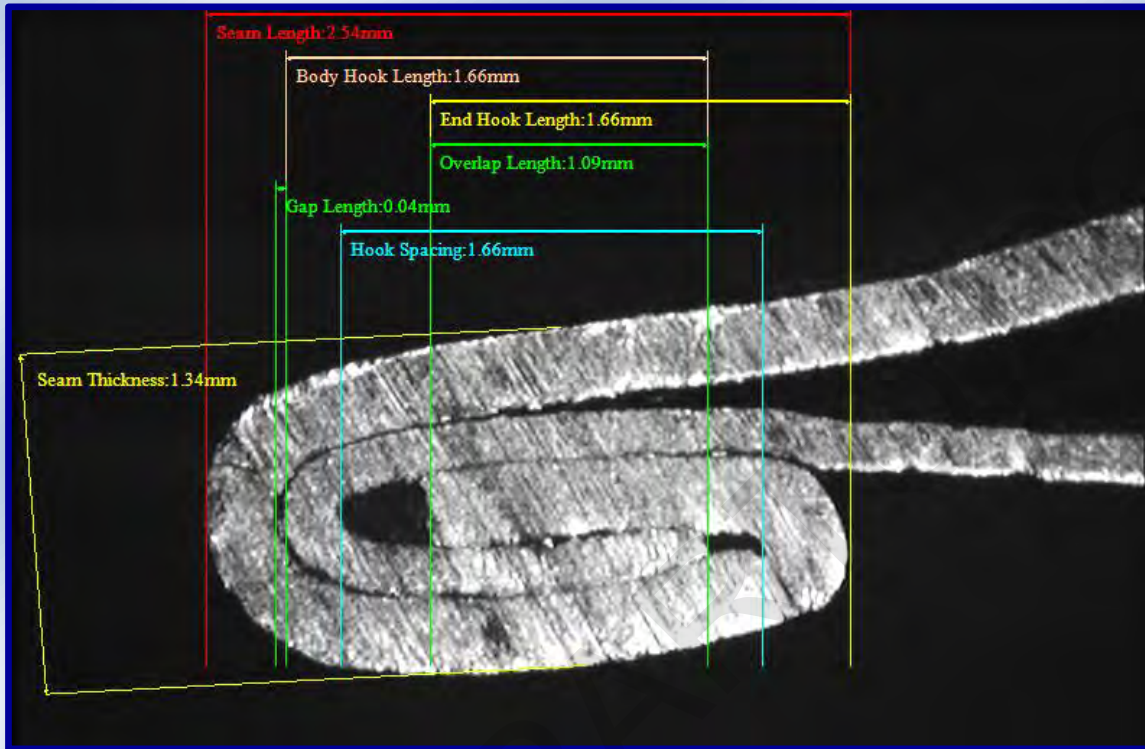
Seaming quality is critical and important for can inspection. And it's the one of the most concerned point for can, beverage and food manufacturing companies. AT2E SeamCheck Automatic Double Seam Projector provides the most convenient way to accomplish the seam inspection.

Using with AT2E seam saw, a clear seam section image could be obtained. Along with professional SeamCheck software, a fast and accurate seam measurement could be done.

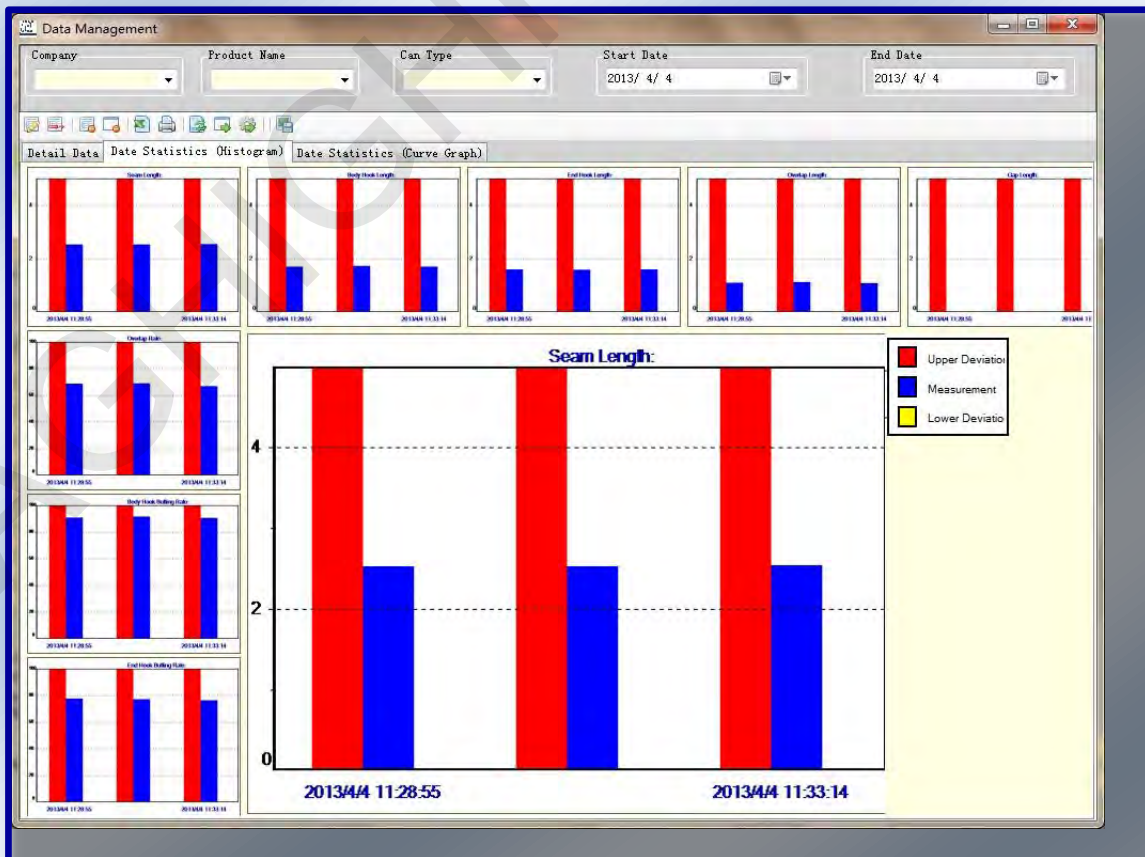
### Characteristics:

- Automatic line positioning (auto-measure function), measurement will be done in 1 second
- Equipped with advanced video capture device which interference-free of external light source and ensured the high image definition
- Software adopted database management system, measuring results and images can be saved in the database and users can review the saved data at any time
- 9 measuring parameters: Seam Length, Body Hook Length, End Hook Length, Overlap, Seam gap, Overlap rate, Body Hook lapping rate, End Hook lapping rate, On-screen Seam Thickness. (Able to extend to 12 parameters through extra gauges, included actual Seam Thickness, actual countersink and Tightness)
- SPC compatible, use a data adapter to collect the data from Mitutoyo Digital Indicator (Actual Seam Thickness; Actual countersink; Actual can height, Actual flange width)
- Data can be exported as an Excel file
- Report format can be customized, flexible for different report styles of different companies
- Predefine various qualification standards, auto judge and warn whether the results are qualified in every measure
- Measurement results and label lines mark directly on the image, results will also display in corresponding field on the screen
- Graph chart statistic function, automatically analyze and compare the measurement results
- Magnifier option enable users to magnify the testing image for a more accurate line positioning
- Measured values are displayed in on-screen and alarm if values are not within specs

- Seam image can be printed and stored
- Provided with calibration piece, calibrate at any time
- Platform adjustable
- Light adjustable



Seam measuring screen



Data statistic screen



Image Report			
Company	Company	Product Name	Product
Operator	Inspector	Shift	Time
Project ID	20130404101001	Remark	UserRemark
Can Type	CanType	Production Date	2009-07-22
Production Line	Line	Units	mm
Sample	1	Out	1
Measuring Mode	Complete *Thickness	Inspect Time	2013/4/4 10:21:02
Seam Length	2.495	Body Hook Length	1.476
End Hook Length	1.584	Overlap Length	1.089
Gap Length	0.037	Seam Thickness	1.382
Overlap Rate	67.424	Body Hook Butting Rate	89.773
End Hook Butting Rate	77.652	Left Gap	0.361
Right Gap	0.165	Hook Spacing	1.415

Image Report

Data Report			
Company	Company	Product Name	Product
End Supplier	CanSupplier	End Code	CanCode
Can Supplier	EndSupplier	Can Code	EndCode
Operator	Inspector	Shift	Time
Project ID	2013040412416	User Remark	UserRemark
Can Type	CanType	Production Date	2013-03-22
Production Line	Line	Units	mm
Total Sample Amount	12	Total Out Amount	3

Process Time	Sample No.	Seam Length	Body Hook Length	End Hook Length	Overlap Length	Gap Length	Seam Thickness	Body Hook Butting Rate	End Hook Butting Rate	Overlap Rate	Left Gap	Right Gap	Hook Spacing	Seam Thickness
2013/4/4 10:21:02	1	2.495	1.476	1.584	1.089	0.037	1.382	89.773	77.652	67.424	0.361	0.165	1.415	1.382
2013/4/4 10:21:03	2	2.500	1.480	1.590	1.100	0.040	1.390	90.000	78.000	68.000	0.370	0.170	1.420	1.390
2013/4/4 10:21:04	3	2.505	1.485	1.595	1.105	0.045	1.395	90.270	78.270	68.270	0.375	0.175	1.425	1.395
2013/4/4 10:21:05	4	2.510	1.490	1.600	1.110	0.050	1.400	90.540	78.540	68.540	0.380	0.180	1.430	1.400
2013/4/4 10:21:06	5	2.515	1.495	1.605	1.115	0.055	1.405	90.810	78.810	68.810	0.385	0.185	1.435	1.405
2013/4/4 10:21:07	6	2.520	1.500	1.610	1.120	0.060	1.410	91.080	79.080	69.080	0.390	0.190	1.440	1.410
2013/4/4 10:21:08	7	2.525	1.505	1.615	1.125	0.065	1.415	91.350	79.350	69.350	0.395	0.195	1.445	1.415
2013/4/4 10:21:09	8	2.530	1.510	1.620	1.130	0.070	1.420	91.620	79.620	69.620	0.400	0.200	1.450	1.420
2013/4/4 10:21:10	9	2.535	1.515	1.625	1.135	0.075	1.425	91.890	79.890	69.890	0.405	0.205	1.455	1.425
2013/4/4 10:21:11	10	2.540	1.520	1.630	1.140	0.080	1.430	92.160	80.160	70.160	0.410	0.210	1.460	1.430
2013/4/4 10:21:12	11	2.545	1.525	1.635	1.145	0.085	1.435	92.430	80.430	70.430	0.415	0.215	1.465	1.435
2013/4/4 10:21:13	12	2.550	1.530	1.640	1.150	0.090	1.440	92.700	80.700	70.700	0.420	0.220	1.470	1.440
Minimum Value		2.495	1.476	1.584	1.089	0.037	1.382	89.773	77.652	67.424	0.361	0.165	1.415	1.382
Maximum Value		2.550	1.530	1.640	1.150	0.090	1.440	92.700	80.700	70.700	0.420	0.220	1.470	1.440
Range		0.055	0.054	0.056	0.061	0.053	0.058	2.927	2.948	2.976	0.059	0.055	0.055	0.058
Average Value		2.524	1.512	1.610	1.122	0.063	1.425	91.541	79.179	69.583	0.393	0.185	1.442	1.425

Data Report

**Equipment includes:**

1. SeamCheck video seam projector
2. SeamCheck professional seam measurement software
3. 2 mm calibration piece

**Technical specifications:**

- Power supply: 220 V
- Serial interface: RS 232
- Resolution: 0.001mm
- Accuracy: 0.005 mm
- Magnification factor: 60 X
- Line positioning magnification factor: 180 X
- Platform capacity: Up to 180 mm dia. can
- Dimension: 47x20x12.5 cm
- Net weight: 5 kg

**Optional parts:**

- ANSS – Antinoise Seaming Cutting Saw / SS-1 Seaming Cutting Saw
- STG-1 Seam Thickness Gauge (digital)
- CG-D Countersink Gauge (digital)
- FWG-1 Flange Width Gauge
- HG-1 Height Gauge
- DTB-1 Data transporting Box with cables



Optional seaming cutting saw: ANSS & SS-1



SeamCheck connecting with optional gauges through DTB-1