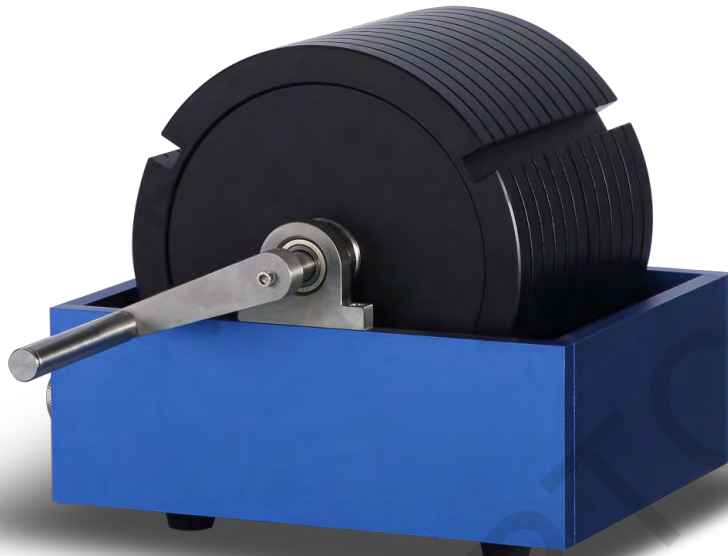


LC-1 Sample Cutter for Tensile Tester



Application

This instrument cuts samples of plastic film, paper and so on in preparation for other tests, such as tensile, peeling, tearing and heat sealing etc. It is compactly structured and easy to use. The edges of sample cut out are even and smooth.

Specifications

| Item | Technical parameters |
|---------------------|-------------------------------|
| Cut sample size | 15mm×210mm (width adjustable) |
| Cut sample quantity | 10 PCS (single layer) |
| Sample thickness | ≤300μm |
| Cutter size | 360×280×250mm |

Features

- ◆ All parts are made from high quality steel, compact structure, easy to assemble and disassemble.
- ◆ It is durable, labor-saving and easy to operate.
- ◆ The sample sizes can be cut accurately , no damage, smooth edges without burr.

Note: GBPI is always committed to product innovation and improved performance, so accordingly product technical specifications are subject to change without notice. GBPI reserves the right to amend and the final power of interpretation.