

SSA-AUTO Secure Seal Analyzer (Automated Model) (Leak test apparatus / Bubble point)

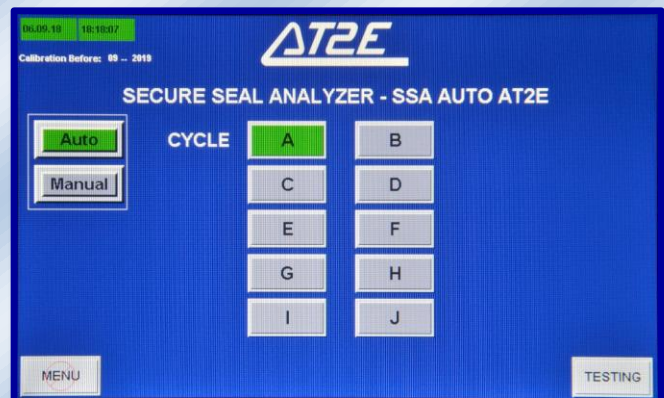


AT2E SSA-AUTO Secure Seal Analyzer is for testing the secure seal performance on products. It's an automated machine with automated piercing process and pressurizing process. Integrating AT2E patent needle, it allows automated installation. By vacuum technology and special design, the needle uses a function of self-holding on the tested products. Stainless steel design makes it resistant to any explosion during the test and ensures the safety of operator. Inner pressure measuring function integrated, increase the inspection efficiency and cost effective.

SSA-AUTO is equipped with a touching screen. Visual and easy to operate. Adjustable pressure, pressurizing rate and holding time stage (up to 12 stages) setting meets different test requests and standard of various products.



Test interface

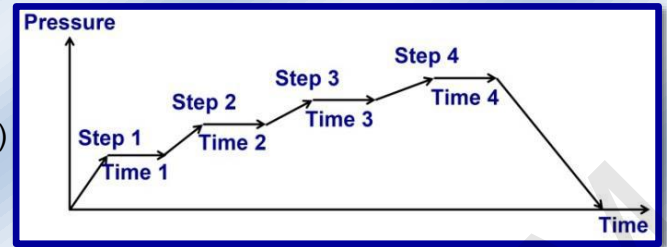


Test cycle selecting screen

- Measuring range: 0 to 16.00 bar
- Test pressure accuracy: $\pm 0.5\%$ F.S.
- Inner pressure measuring range: 0 to 16.00 bar (optional)
- Inner pressure accuracy: $\pm 0.5\%$ F.S.
- Units: bar
- Resolution: 0.01 bar
- Tests on bottles, cans and preforms
- AT2E patent special needle
- Sample range: 350 mm in height & 120 mm in diameter
- Auto and manual test mode compatible
- Touching screen display
- Stainless steel secured device: Resistant to explosions
- Up to 12 stages of pressure, pressurizing rate and holding time setting
- Testing curve review
- 30 products memorization
- 10 operators memorization
- Configuration by administration passwords
- Dynamic display: Real-time pressure / Vacuum level
Pressure holding time / hour / date
- Display: product name / operator / batch N° / sample N°
- Maximum pressure protection setting
- 0-16 bar pressure source for testing
- RS232 output (used to connect to software)
- Overall size: 610 (L) x 550 (W) x 1050 (H) mm
- Net weight: 85 kg

Optional parts:

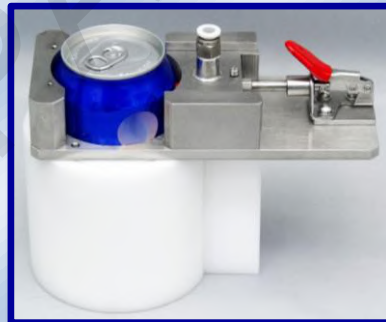
- Can test assembly (design subject to can type and can type amount)
- "QUALIPRESS" software
- Compatible clamping system (26-35 mm neck diameter, others on request)
- Inner pressure measuring integrated model
- Multi-positions model
- External booster



Illustrative Testing curve



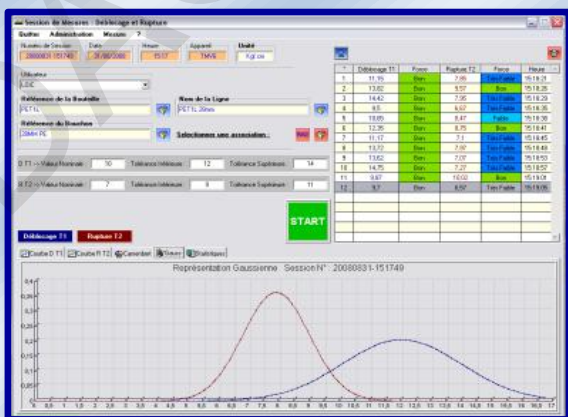
Automated piercing and testing with
AT2E patent needle



Can test assembly



With inner pressure
measuring



"QUALIPRESS" software (Optional)



SSA-AUTO Multi-positions