

## E Series Manual Vision Measuring Machine



2D AND 2.5D MEASUREMENT

HIGH-DEFINATION IMAGE DISPLAY

VISION MEASURING HEIGHT FUNCTION

AUTO EDGE DETECT FUNCTION

ONLINE SPC FUNCTION

MULTIPLE OUTPUT FORMATS:WORD EXCEL CAD

### Features

- "HIWIN" P level linear guideway and precision cross roller guideway for increased accuracy & working life
- Integrated granite base and column ensures machine stability.
- Supplied with SBK-E multifunctional 2.5D measuring software, automatic edge detection and vision height measurement function.
- Supplied with removable & dismountable console support table
- High-definition detent step zoom lens and high-resolution CCD performs high-definition measurement.
- Supports different file formats of data outputs such as Word, Excel, CAD etc. DXF import for quick inspection.

Model	Voltage input	Power
E200	110-230V alternate current	500W
E300	110-230V alternate current	500W
E400	110-230V alternate current	500W
E500	110-230V alternate current	500W



دقیق پرتو

DAGHIGH PARTO

Laboratory Test Equipment

شرکت دقیق پرتو

تامین کننده تجهیزات آزمایشگاهی و کنترل کیفی

۰۲۱-۶۶۹۳۷۲۱۴

## Specification

Model	EP200
Measuring range(mm)	200*100*200
Machine size(mm)	697*787*1660
Weight(kg)	160
Max. load(kg)	30
Accuracy of X-Y axis	2.5+L/200 $\mu$ m
XYZ resolution	1.0 $\mu$ m
Repeatability(mm)	0.003
Magnification	optics zoom ratio: 0.7-4.5X; image zoom ratio: 44-256X
Control system	SBK3000 control box, USB port, adjustable light
Operated mode	handle wheel


## Main Parts

Parts	Picture	Specifications
CCD		1.3M pixel digital color CCD
Optics		6.5:1 continual zoom step lens
Surface illumination		*LED cold light*256 level programmable *Brightnessadjustable
Bottle illumination		*LED cold light*Parallel light *256 level programmable *Brightnessadjustable
Linear guide		Taiwan P grade linear guideway
Linear scale		Glass linear scaleresolution 1um


## Optional Part

### 1. Renishaw MCP probe


For hole or groove measure .

	<b>RENISHAW</b>		
	Stylus diameter	Φ1 Φ2 Φ3(optional )	
	Stylus Length	200mm	
	Calibration block	50mm	
	Static accuracy	±1.5um	
	Measure accuracy	±3.0um	
	Can optional extension road according to measure requirement		


### 2. Linear scale

	Glass scale resolution 0.0005mm or 0.0001mm
---	---


### 3. Coaxial light

	Highlight the uneven surface of the object, overcome the interference caused by the surface reflection, make brightness uniform and image clearly
---	---

### 4. Objective Lens

	Long working distance metallographic objective lens :5X, 10X ,20X
---	---

### 5. Original Windows OS

	Original Win10 or Win7 professional English version
---	---

## Machine Display



## Inner wiring



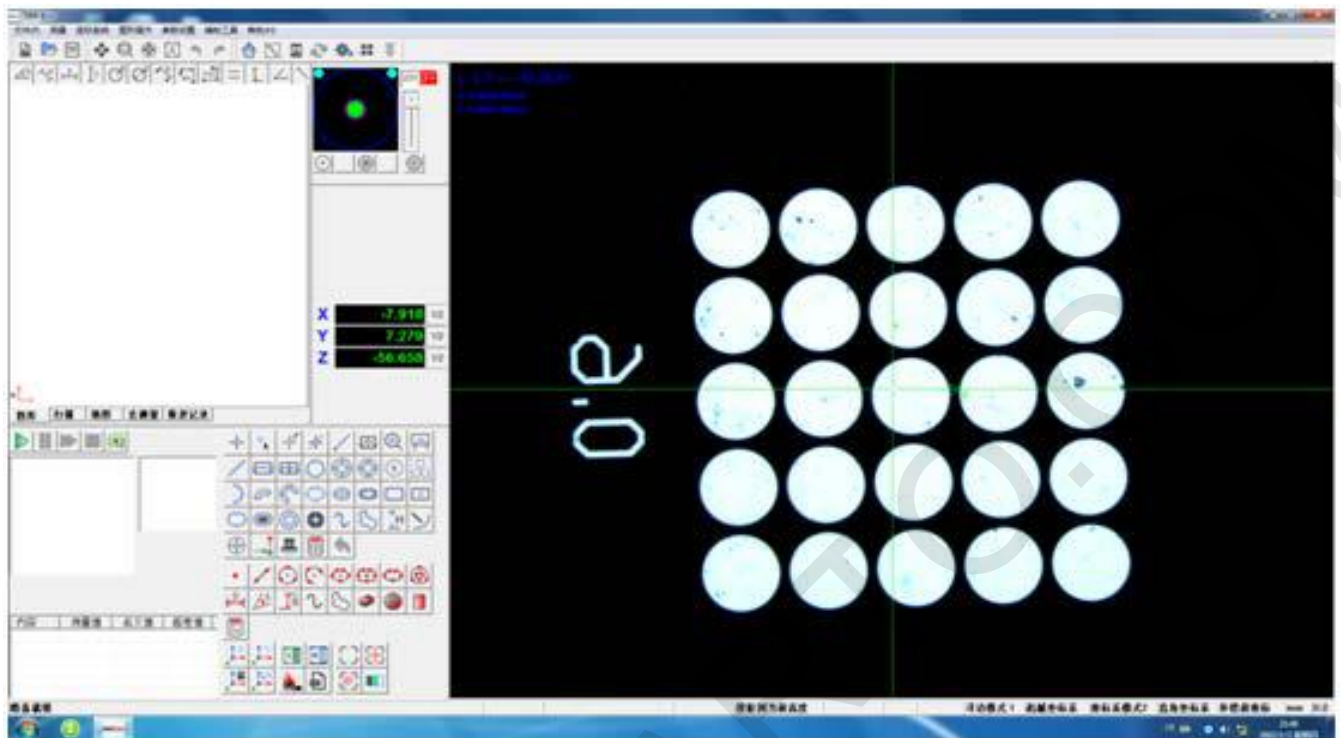
**دقیق پرتو**  
**DAGHIGH PARTO**  
Laboratory Test Equipment

شرکت دقیق پرتو  
تامین کننده تجهیزات آزمایشگاهی و کنترل کیفی

۰۲۱-۶۶۹۳۷۲۱۴

## Software(SOBEK-INSPEC Manual version)

### Software interface

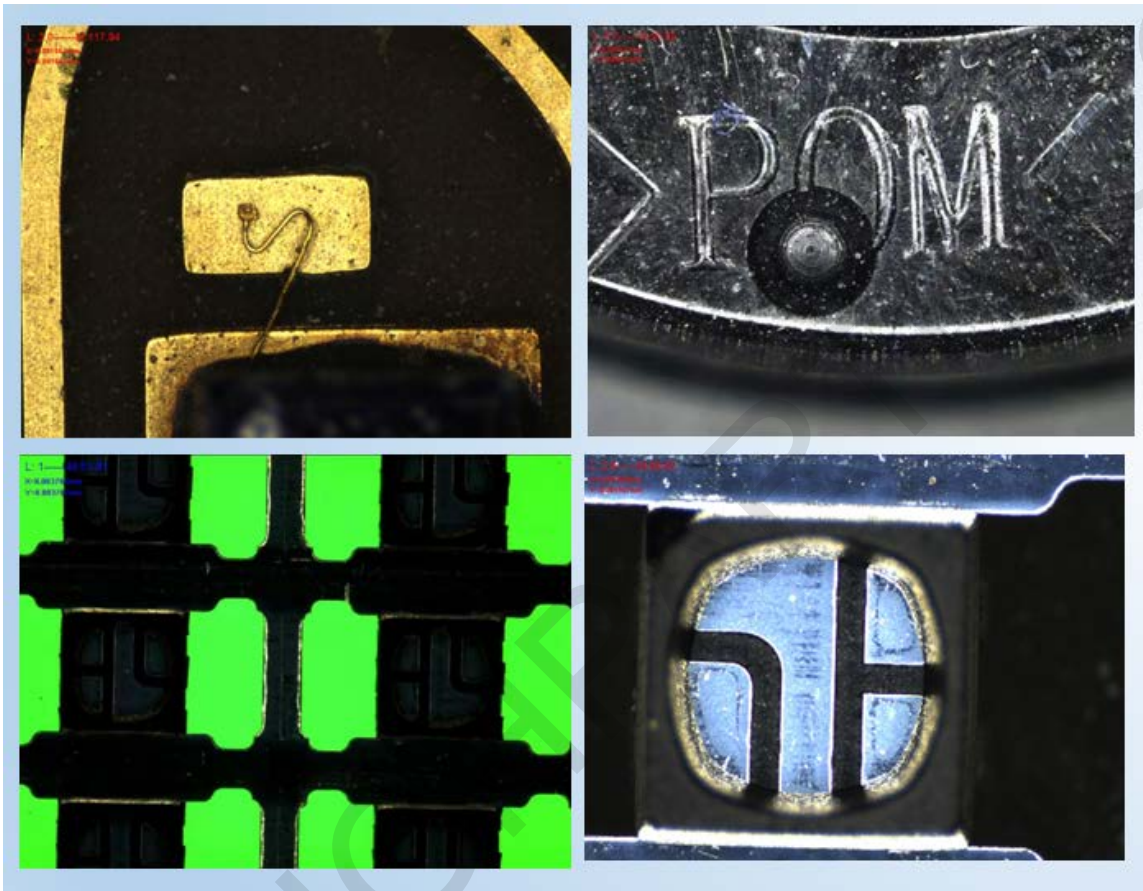


### Software Main Function

- **Element measurement**, It can measure 12 elements (point, line, circle, arc, ellipse, rectangle, groove, ring, distance, angle, open cloud line, closed cloud line)
- **Macro measurement function**, to associate some of the measurement construction commands to a button, reduce the number of users to operate the mouse, improve work efficiency.
- **Automatic capture measurement**, using the mouse circle to hold the edge of the workpiece, the line, circle, or arc can be obtained automatically
- **Element structure**, The construction of elements provides 10 construction methods: translation, rotation, extraction, combination, parallelism, image recognition, symmetry, intersection.
- **Rich display results**, The measurement results of various elements show that the amount of information is large enough to meet the needs of various customers
- **Can display optical magnification and screen magnification**,
- **Coordinate system**, the multiple coordinate system can be set up according to the drawing, and the coordinate transformation of each coordinate system can be realized.
- **User program**, Unrestricted user program recording, editing, saving, and exhaling function, The user program can record and edit all the user actions to achieve the replication measurement and greatly improve the measurement efficiency.
- **Auxiliary dimming**, The dimming indicator will indicate to the user what time the best light intensity, measuring error caused by light is avoided
- **Graphic function**, With perfect graphics processing and display function (zoom, translation, window display, partial enlargement and full screen display)
- **Annotation function**, It can directly mark the angle, distance, X direction distance, Y direction distance, circle (ARC) radius, circle (ARC) diameter and arc length in the drawing area and image area element graphics

- **System error correction**,The software has a system error correction function.
- **Scan function**
- **Large MAP function**,The workpiece can be divided into many areas to take pictures, form a large map, and canbe tagged on the map.
- **Language conversion**,Support all languages
- **Report function**,The measurement data can be exported to Excel, Word, AutoCAD and TXT.

**Image display**



**Computer**

<b>Brand:</b> DIY computer	
<b>CPU:</b> i3	
<b>RAM:</b> 4G	
<b>Hard Disk:</b> 120G SSD	
<b>Monitor:</b> 21.5 inch	

## Packaging(Wooden Case)



Model	Packaging Size (mm)	Gross Weight (kg)
E200	900*1300*1100	160
E300	900*1300*1100	230
E400	1200*1200*1730	300
E500	1300*1400*1750	500

## Standard Configuration List

Models and Specifications	Quantity
E host	1 set
SBK-INSPEC software	1 pc
Pixel calibration block	1 pc
16G U disk (inner software manual )	1 pc
Computer System ( with host ,display ,mouse keyboard)	1 set
Table	1 pc
Warranty card	1 pc



**دقیق پرتو**

**DAGHIGH PARTO**

Laboratory Test Equipment

شرکت دقیق پرتو

تامین کننده تجهیزات آزمایشگاهی و کنترل کیفی

۰۲۱-۶۶۹۳۷۲۱۴